

Meat&Doria **207145**
Hoffer Products **207145**



FOCUS

Windshield cleaning system



What is it?

The windshield cleaning system is an integrated vehicle feature designed to ensure optimal visibility for the driver in the presence of rain, mud, insects, dust, or other debris. Proper functioning of this system is essential for **road safety** and **driving comfort**.



FOCUS
Windshield cleaning system



Focus n. 005
May 2025

MEAT & DORIA
SPECIAL PARTS
SINCE 1945

HOFFER
PRODUCTS
SINCE 1999

Main components

The windshield cleaning system consists of various mechanical, electrical, and hydraulic components that work together in synergy.

Wiper blades

They physically remove water and dirt from the windshield.

Wiper motor

Provides the driving force for the alternating movement of the blades. It operates on direct current and features adjustable speeds as well as an intermittent mode that can be programmed via the steering column switch.

Washer pump

Draws and pressurizes the washer fluid.

Rain sensor (optional)

Detects the presence and intensity of rain on the windshield and activates the system accordingly.

Wiper arms

Support and move the blades with an oscillating motion generated by the wiper motor through a system of linkages or gears.

Washer fluid reservoir

A plastic container with a variable capacity (ranging from 1 to 5 liters).

Spray nozzles

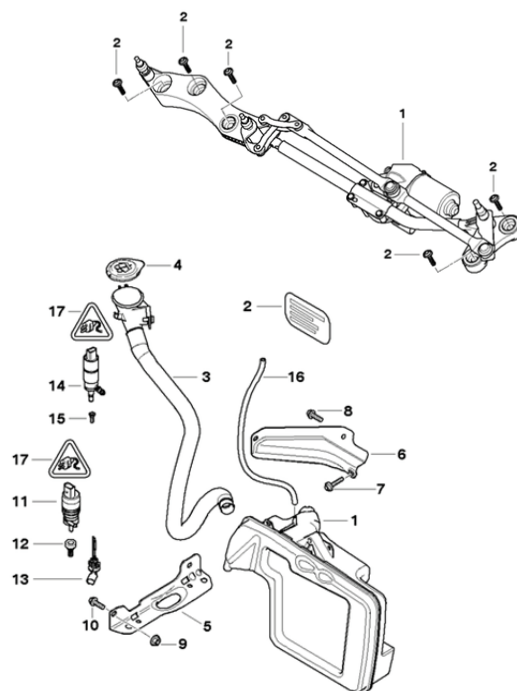
Mounted on the hood, integrated into the arms, or placed on the bumpers, they spray the fluid onto the windshield or headlights.

Flexible hoses

Connect the reservoir to the spray nozzles.

System operation

- 1** The user activates the wiper control using a lever on the steering column.
- 2** The wiper motor moves the arms and blades.
- 3** When needed, the washer system is activated:
 - The pump sends fluid to the nozzles;
 - The fluid is sprayed onto the windshield;
 - The blades remove the fluid and any dirt.
- 4** In vehicles equipped with a rain sensor, the entire process can occur automatically.



Controls and maintenance

Washer fluid **check** and **refill**.

Replacement of worn wiper blades.

Verification of the motor and rain sensor functionality.

Relay **functionality check**.

Inspection of hoses and nozzles (no blockages or leaks).

Nozzle cleaning: ensure they are not clogged to guarantee proper fluid distribution.

Mechanical inspection: check arms, linkages, and joints for wear or damage.

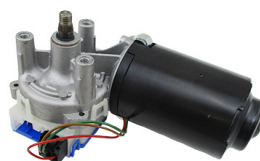
Product range

Washer pumps



Meat&Doria **20108**
Hoffer Products **7500108**

Wiper motors



Meat&Doria **27005**
Hoffer Products **H27005**

Wiper arms



Meat&Doria **227043**
Hoffer Products **227043**

Wiper systems



Meat&Doria **207065**
Hoffer Products **207065**

Headlight washer system



Meat&Doria **209040**
Hoffer Products **H209040**

Connectors



Meat&Doria **9049**
Hoffer Products **8029049**





Wiper control levers



Meat&Doria **23405**
Hoffer Products **2103405**

Washer fluid reservoirs



Meat&Doria **2040001**
Hoffer Products **2040001**

Wiper relays



Meat&Doria **7242105**
Hoffer Products **H7242105**